

Parking Decks

- Decks
- Parking Spaces
- Walkways

FLOORS THAT CURE IN ONE HOUR

OVERVIEW

Based on our clients' concerns and specific market demands, Res-Tek's experienced team of industry experts has developed a protective coating solution specifically designed for parking deck facilities. This demanding, high traffic environment requires water and stain proofing solutions that are durable, long-lasting, and affordable. Res-Tek's DEK-Guard™ (MMA-based deck coating system) is a high quality and high performance system with a one-hour cure time allowing you to resume operations one hour after product application.

DEK-Guard is the flagship for our new RT-600 line of products. It provides the high level of durability and performance required in the parking deck environment by taking advantage of the properties of MMA, resulting in a product with a one-hour cure time, extended durability, and increased flexibility. In addition, DEK-Guard demonstrates a high level of visual appeal designed to engage as well as inform users.

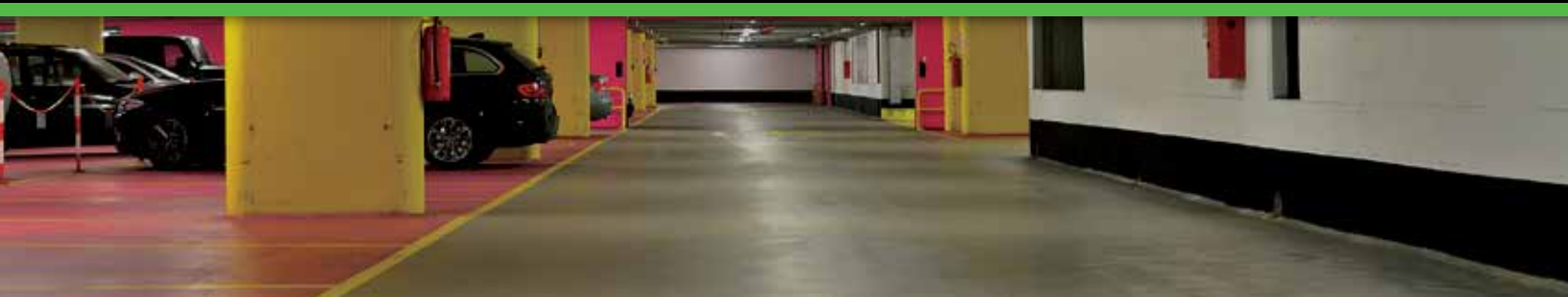
DEK-GUARD™ RT-600 SERIES ADVANTAGES

Fast Curing – Your parking structure will be available to normal traffic in no more than 60 minutes after application of topcoat.

Low Temperature Curing – Down to -15° F.

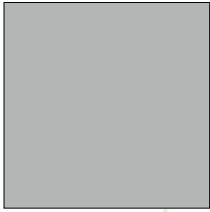
Durability – Extends the life of parking structures by increased waterproofing and diminishing damage caused by chemical aggression.

Toughness – While other systems may focus on flexibility and elongation, DEK-Guard combines superior tensile strength and relatively high elongation rate to provide an improved toughness not found in typical urethane or epoxy deck coating systems.



DEK-Guard™ 600 Series Deck Coating System

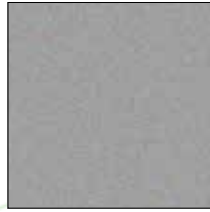
AVAILABLE COLORS



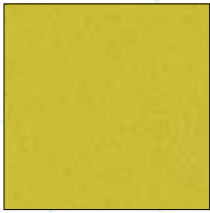
Concrete Gray



Light Gray



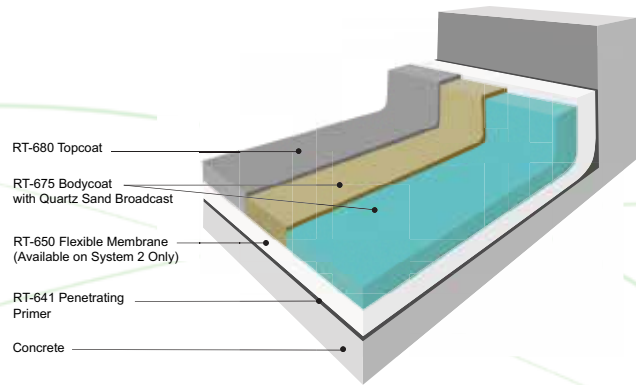
Silver Gray



Safety Yellow



White



Penetrating Primer permanently anchors the system; subsequent layers chemically fuse to one another to form a monolithic layer, avoiding intercoat adhesion problems.

PHYSICAL PROPERTIES

Property	Value	Test Method
Percentage Reactive Resin	100%	—
Adhesion (RT-641R Primer)	Exceeds Tensile Strength of Concrete	ASTD 4541
Elongation (RT-650 Flexible Membrane)	80% to 90% at Rupture	ASTM D638
Tensile Strength (RT-675 Body Coat)	1,150 psi	ASTM D638
Hardness (RT-680 Topcoat)	73 (Type D)	ASTM D2240
Chemical Resistance	Effect	ASTM D543
Week Acids	None	
Alkalis	None	
Salt Solutions	None	
Sunlight (UV)	None	
Oil, Grease, Transmission Fluid	None	

ABOUT RES-TEK

Res-Tek is a leading U.S. manufacturer dedicated to the formulation and production of seamless commercial and industrial flooring systems, concrete deck coatings, and polymer concrete repair mortars. Our innovative proprietary product lines, based on high quality reactive acrylic resins (methyl-methacrylate) and cementitious urethane are reliable, durable, and fast curing, offering a superior solution for even the most challenging environments. Due to its several unique features, Res-Tek has been the flooring system of choice in applications across multiple industries such as retail and public facilities, aviation, sports and arenas, among others.

Exceptional Products, Innovative Solutions

To learn more about Res-Tek flooring solutions, visit us at www.Res-Tek.net